

# IEC309 Series <50V

## INDUSTRIAL PLUGS AND SOCKETS



IEC 309 is a range of industrial plugs and sockets for mobile, surface or flush mounting installation for very low voltage applications of less than 50V.

Functional thanks to the adoption of screw terminals.

## VERSIONS



Plugs and connectors



Flush mounting socket outlets



Surface mounting socket outlets

## REFERENCE STANDARDS

### EN 60309-1

Plugs, socket-outlets and couplers for industrial purposes.  
Part 1: general requirements.

### EN 60309-2

Plugs, socket outlets and couples for industrial purposes.  
Part 2: dimensional interchangeability requirements for pin and contact-tube accessories of harmonised configurations.

## QUALITY MARKS



## TECHNICAL CHARACTERISTICS

Rated current:	<b>16A-32A</b>
Rated voltage:	<b>&lt;50V~</b>
Frequency:	<b>c.c. - 50÷500Hz</b>
Insulating voltage:	<b>500/690V~</b>
Protection degree:	<b>IP44-IP66/IP67</b>
Operating ambient temperature according to the reference standard:	<b>-25°C +40°C</b>
Max. operating ambient temperature:	<b>60°C</b>
Glow Wire test:	<b>650°C/850°C</b>
Material:	<b>Thermoplastic</b>
IK degree at 20°C:	<b>IK08 - IK10</b>

## BEHAVIOUR WITH CHEMICAL AND ATMOSPHERIC AGENTS

Saline solution	Acids		Bases		Solvents				Mineral oil	UV rays
	Concentrated	Diluted	Concentrated	Diluted	Hexane	Benzol	Acetone	Alcohol		
Resistant	Limited Resistance	Resistant	Limited Resistance	Resistant	Resistant	Limited Resistance	Not Resistant	Resistant	Resistant	Resistant

Resistance values to chemical agents have to be considered indicative.  
For further information and specific substances, contact the technical service.

Dimensional drawings: [www.scame.com](http://www.scame.com)

■ **WIRING AND INSTALLATION**

Wiring capacity of the terminals  
Cross-section of connectable conductors (mm<sup>2</sup>)

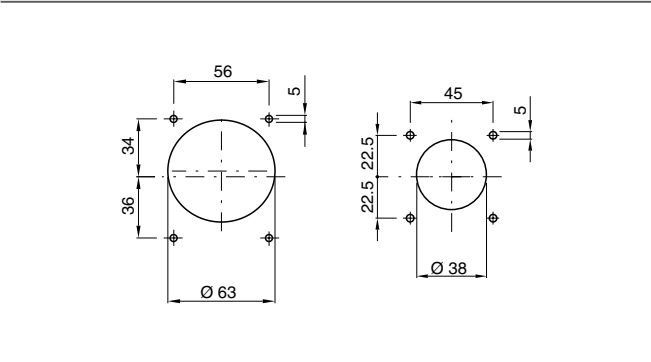
Rated voltage	Rated current (A)	Plugs and connectors		Socket outlets	
		Min	Max	Min	Max
>50V	16A	4	10	4	10
	32A	4	10	4	10

Max. cable size accepted by the cable clamp

Rated current (A)	Outside Ø mm	
	Min	Max
16A	8	15
32A	11,5	21

■ **FIXING**

SCAME sockets for voltage < 50V can be surface mounted or panel mounted on panel boards, or where the surface is set up with the following perforation.



(Dimensions in mm)

**APPLICATION EXAMPLE**

